

THE HISTORICAL SOCIETY OF PALM DESERT

THE ROBBINS HOUSE 1958

46215 Goldenrod Lane, Palm Desert, CA



Photo:Linda Holden Clode

This recently renovated 2 bedroom plus den, 3 bath 2,327 square foot home sits on a .51 acre lot in South Palm Desert.

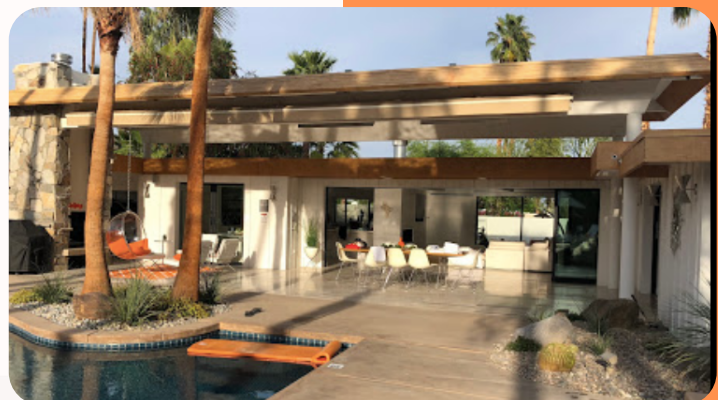
The designed is attributed to Harold Bissner Sr. who worked extensively with the original owner and contractor, Lloyd Robbins.

This house features a massive dual sided fireplace, extensive glass walls out to a beautiful pool area and west-facing mountain views.

ARCHITECT:
HAROLD BISSNER SR.
(ATTRIBUTED)

BUILDER:
LLOYD ROBBINS

ORIGINAL OWNERS:
MR AND MRS LLOYD
ROBBINS



Official Modernism Week Event



Photos: Linda Holden Clode

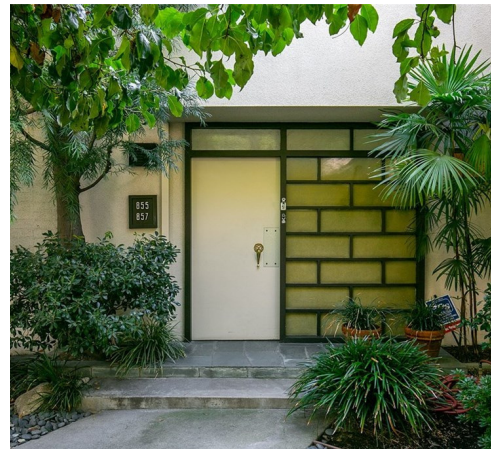
HAROLD BISSNER SR.

Harold J. Bissner (1901-1988), AIA, was a well-known Pasadena architect best known for Spanish Colonial Revival and Monterey Revival style residences build in the 1920s and early 1930s in Los Angeles and Pasadena.



E. Lawrence Brown House, Pasadena, 1928. Photo: Richard Horn

As a middle-aged man he enlisted in WW2, as did his son, Harold Bissner, Jr. (1925-2020). Both were stationed in the South Pacific. Bissner Sr. spent time in Japan which had an immense influence on his architectural style. When he returned to Pasadena after the war he began to design modern residences with a distinctly Asian influence. The Belle Grove Apartments (right) in Pasadena are an example of this change of style.



After the war, Bissner Jr. joined his father's practice. In 1951 he established his own practice and went on to prominences as a commercial architect, designing the production facilities, corporate offices and restaurants for Van De Kamp's Holland Dutch Bakers and Restaurants, Baskin- Robbins Ice Cream Company Worldwide, JBL/Harman International Speakers, Royal Industries and many other international companies.

In 1958 Harold Bissner Sr. opened a Palm Desert office. His most prominent works in Palm Desert include the Halekulani Apartments (1958), Village Green (1961), Sands and Shadows (1963), Maui Palms (1964), Mountain Shadows (1964) as well as numerous single-family homes in Palm Desert and Pinyon Crest, where he worked with contractor Lloyd Robbins.

The Robbins house on Goldenrod Lane is believed to be designed by Bissner (1958).



Desert Sun , 1958

Historical Society of Palm Desert
www.hspd.org

